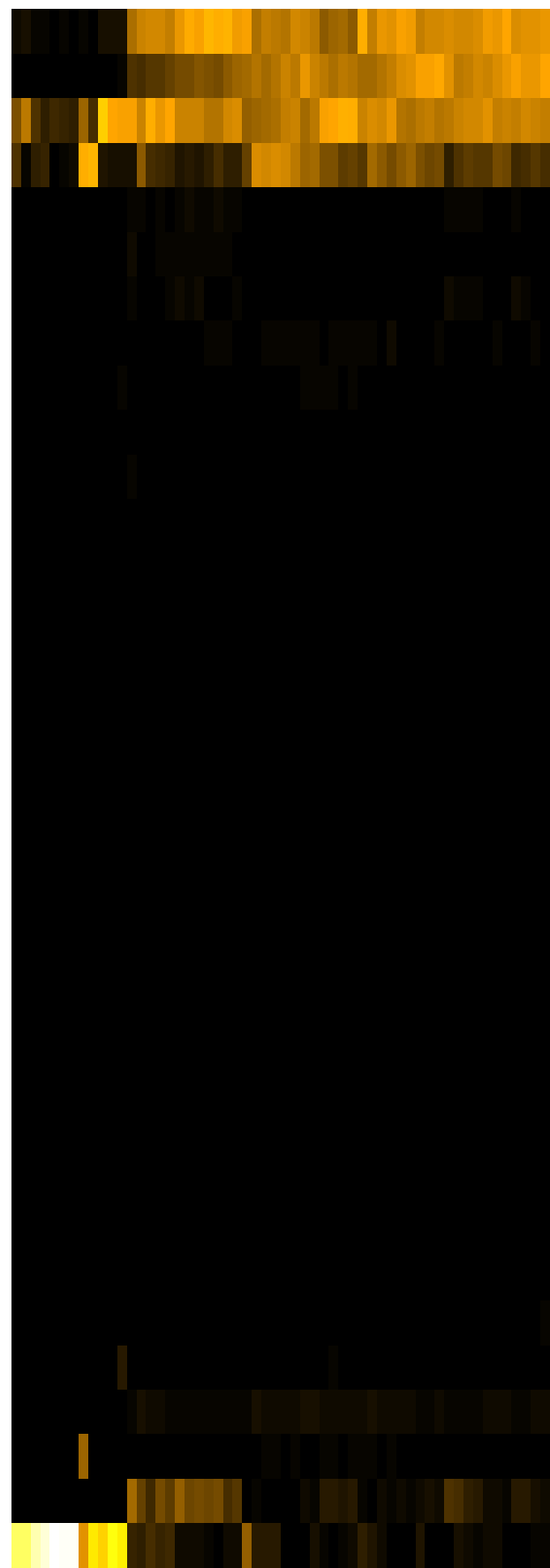
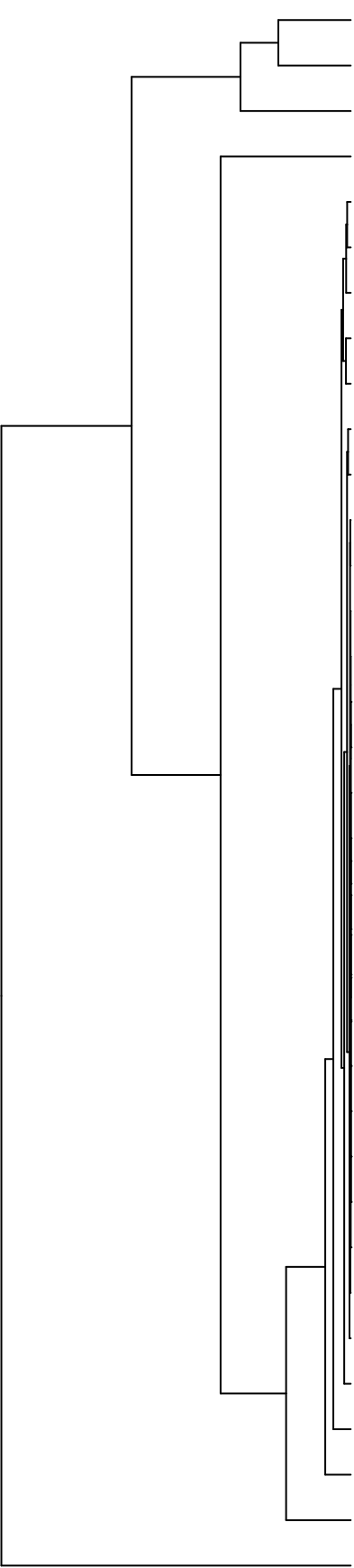


Group006  
 H Final -PMA  
 F Final -PMA



- Veillonellaceae
- Pasteurellaceae
- Streptococcaceae
- Neisseriaceae
- Campylobacteraceae
- Leptotrichiaceae
- Prevotellaceae
- Actinomycetaceae
- Gemellaceae
- Porphyromonadaceae
- Lachnospiraceae
- Erysipelotrichaceae
- Saccharibacteria\_(TM7)\_[F-1]
- Atopobiaceae
- Burkholderiaceae
- Absconditabacteria\_(SR1)\_[F-1]
- Propionibacteriaceae
- Flavobacteriaceae
- Yersiniaceae
- Moraxellaceae
- Sphingomonadaceae
- Microbacteriaceae
- Rhizobiaceae
- Phyllobacteriaceae
- Weeksellaceae
- Hymenobacteraceae
- Saccharibacteria\_(TM7)\_[F-2]
- Mycobacteriaceae
- Comamonadaceae
- Pseudomonadaceae
- Staphylococcaceae
- Carnobacteriaceae
- Micrococcaceae
- Fusobacteriaceae
- Enterobacteriaceae

- F28914.S455
- F28914.S453
- F28914.S452
- F28914.S456
- F28914.S454
- F28914.S602
- F28914.S440
- F28914.S433
- F28914.S436
- F28914.S438
- F28914.S596
- F28914.S595
- F28914.S293
- F28914.S290
- F28914.S292
- F28914.S136
- F28914.S132
- F28914.S131
- F28914.S294
- F28914.S280
- F28914.S277
- F28914.S117
- F28914.S135
- F28914.S115
- F28914.S113
- F28914.S274
- F28914.S120
- F28914.S278

Samples

Family